



TM

**CODE CONSULTANTS, INC.**

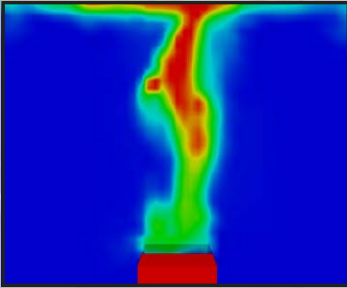
**The Fire Protection and  
Life Safety Experts <sup>SM</sup>**

**Fire, Smoke, and  
Egress Modeling**



# Computer Fire, Smoke, and Egress Modeling

**CCI** uses its expertise at applying a range of fire, smoke, and egress models to develop cost effective solutions to fire protection and life safety issues.



**CCI's** principals and staff are members of many NFPA and ICC committees, including:

- Life Safety Code (NFPA 101)
- Installation of Sprinkler Systems (NFPA 13)
- National Fire Alarm Code (NFPA 72)
- Smoke Management Systems (NFPA 92B & 204)
- International Building Code-Fire Safety

**CCI's** licensed Fire Protection Engineers are registered in all 48 contiguous states and Puerto Rico.



**CCI** also works on behalf of the Authority Having Jurisdiction (AHJ) and the building owner/developer to provide third-party review of computer fire and egress modeling.

# Fire and Smoke Modeling

**CCI** uses the most advanced fire and smoke modeling methods in the industry to:

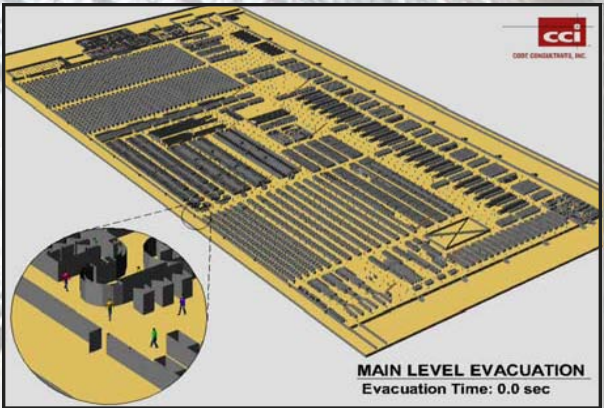
- Design economical smoke control systems
- Develop alternate fire protection and detection system designs
- Analyze alternate methods of construction
- Develop alternate methods of protection for structural elements

## *Benefits of Fire and Egress Modeling...*

- Reduced atrium smoke exhaust and make-up fan size
- Cost savings on fireproofing
- Increased travel distance
- More economical fire protection & detection systems



# Egress Modeling

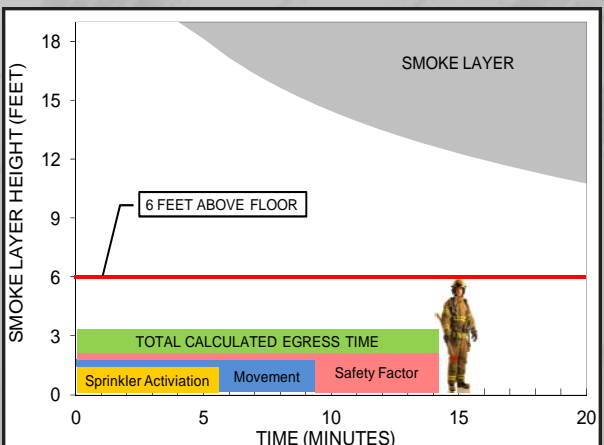


**CCI** uses egress modeling to:

- Calculate required egress time
- Evaluate egress times for emergency planning
- Develop alternate methods for occupant loads and travel distance
- Design efficient egress and ingress systems

**CCI** can use the models to create:

- Video animations of occupant egress during fire/emergency conditions
- Full color graphical representations of the building and occupants



# Modeling Project Experience

## Medical Facilities

- Columbia St. Mary's Main Hospital
- Immanuel Medical Center
- Lakeside Hospital
- New York Presbyterian Hospital
- Rachel's Courtyard at Presbyterian Hospital
- Salem Township Hospital Medical Office Building
- St. Peter's Hospital
- The Cleveland Clinic Foundation Heart Center
- Trinity Regional Medical Center



## Sports Facilities

- Dolphin Stadium
- FedEx Field
- Marlins Ballpark
- Minnesota Twins Ballpark
- New Meadowlands Stadium
- New York Sports and Convention Center
- Newark Arena

## Higher Education

- Cornell Life Sciences Technology Building
- CUNY Fiterman Hall
- Drexel University Integrated Sciences Building
- Eastern Michigan University Mark Jefferson Hall
- Miami University Psychology Building
- University of Michigan Ross School of Business
- University of Missouri Life Science Building
- Washington University Olin School of Business
- Yale University Hendrie Hall

## Transit

- HAECO Hangar 2 at Chek Lap Kok Airport
- Moynihan Station



## Gaming

- Foxwoods Resort - Casino
- Hollywood Casino  
Lawrenceburg
- L'auberge du Lac Hotel &  
Casino

## Museums & Special Structures

- Connecticut Science Center
- Fort Worth Museum of Science and History
- Museum of Modern Art (MoMA) Education Wing
- New Museum of Contemporary Art
- World Trade Center Site Redevelopment



## **CODE CONSULTANTS, INC.**

2043 Woodland Parkway, Suite 300  
St. Louis, Missouri 63146  
314.991.2633 phone  
314.991.4614 fax

## **CODE CONSULTANTS PROFESSIONAL ENGINEERS, PC**

215 West 40th Street, 15th Floor  
New York, NY 10018  
212.216.9596 phone  
212.216.9619 fax

[www.codeconsultants.com](http://www.codeconsultants.com)

### **The Fire Protection and Life Safety Experts <sup>SM</sup>**

- Code Consultation
- Fire and Egress Modeling
- Accessibility Consultation
- Fire Alarm Design
- Mass Notification Design
- Fire Sprinkler Design

### **FOR MORE INFORMATION, CONTACT:**

**Joe Kolodziej**  
**Director of Business Development**  
[JoeK@codeconsultants.com](mailto:JoeK@codeconsultants.com)